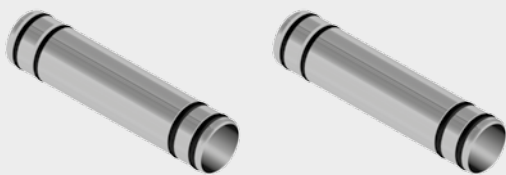


## HYDRAULIC EXPANSION SET



### Product description

The expansion set is used for the hydraulic connection between the collectors of an array. By means of a new connection system, up to 10 collectors can (depending on the format) be interconnected within an array. Easy installation of the connector (plug & flow) by pushing into the end of the expanded header.

### Specifications

Type	HE-PFM
Item no.	1040715
Hydraulic connector	Length 96 mm, each set contains 2 connectors

### Installation

